

Access to Dental Care Among Residents in Kansas

Results from the 2017 Kansas and Missouri Consumer Health Access Survey (KMHS)



38% of adults and 17% of children in Kansas currently lack dental insurance coverage.



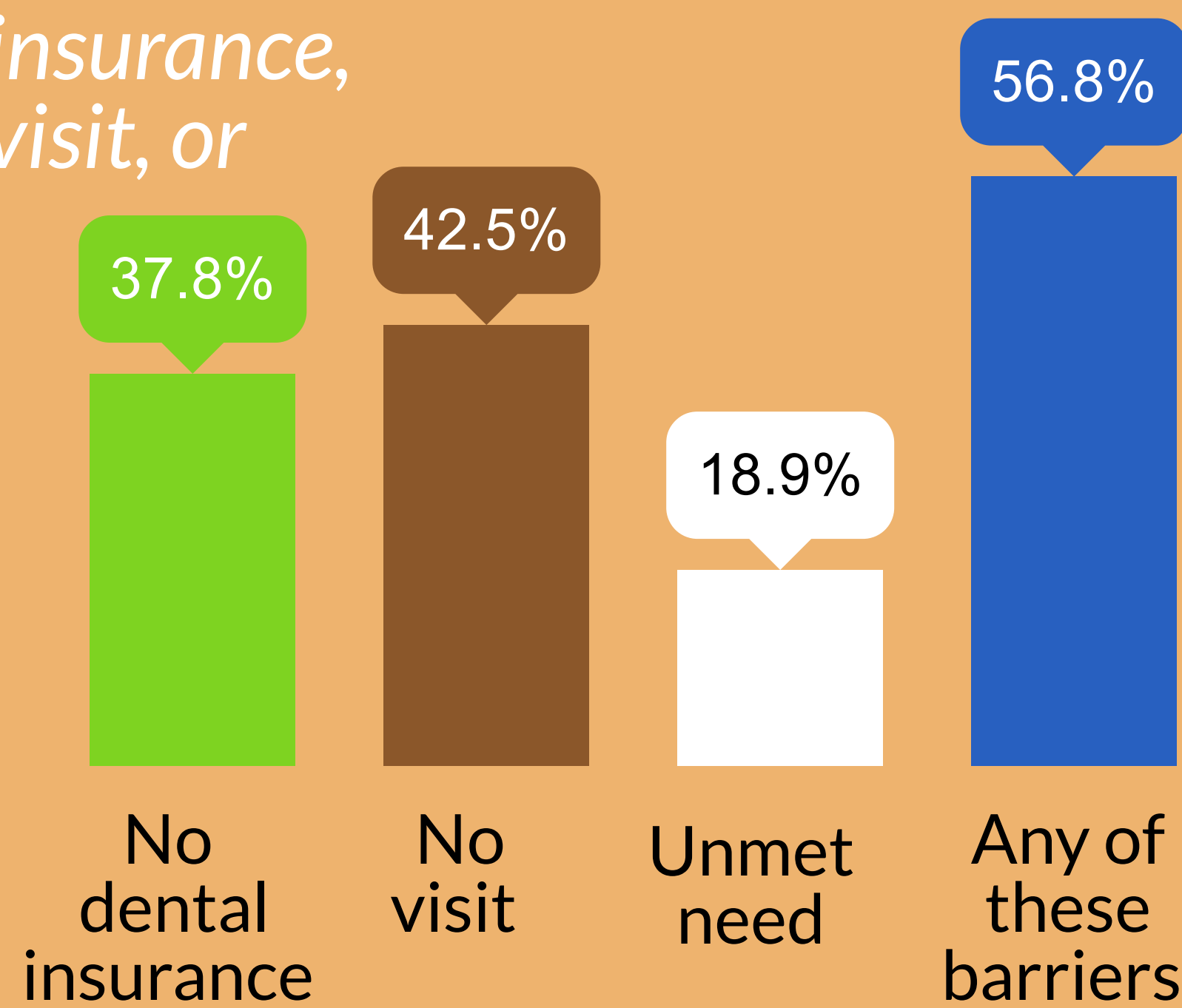
These estimates represent

664,100 adults
ages 19-64

109,700 children
ages 2-18

57% of adults reported one of three dental access barriers in the past year:

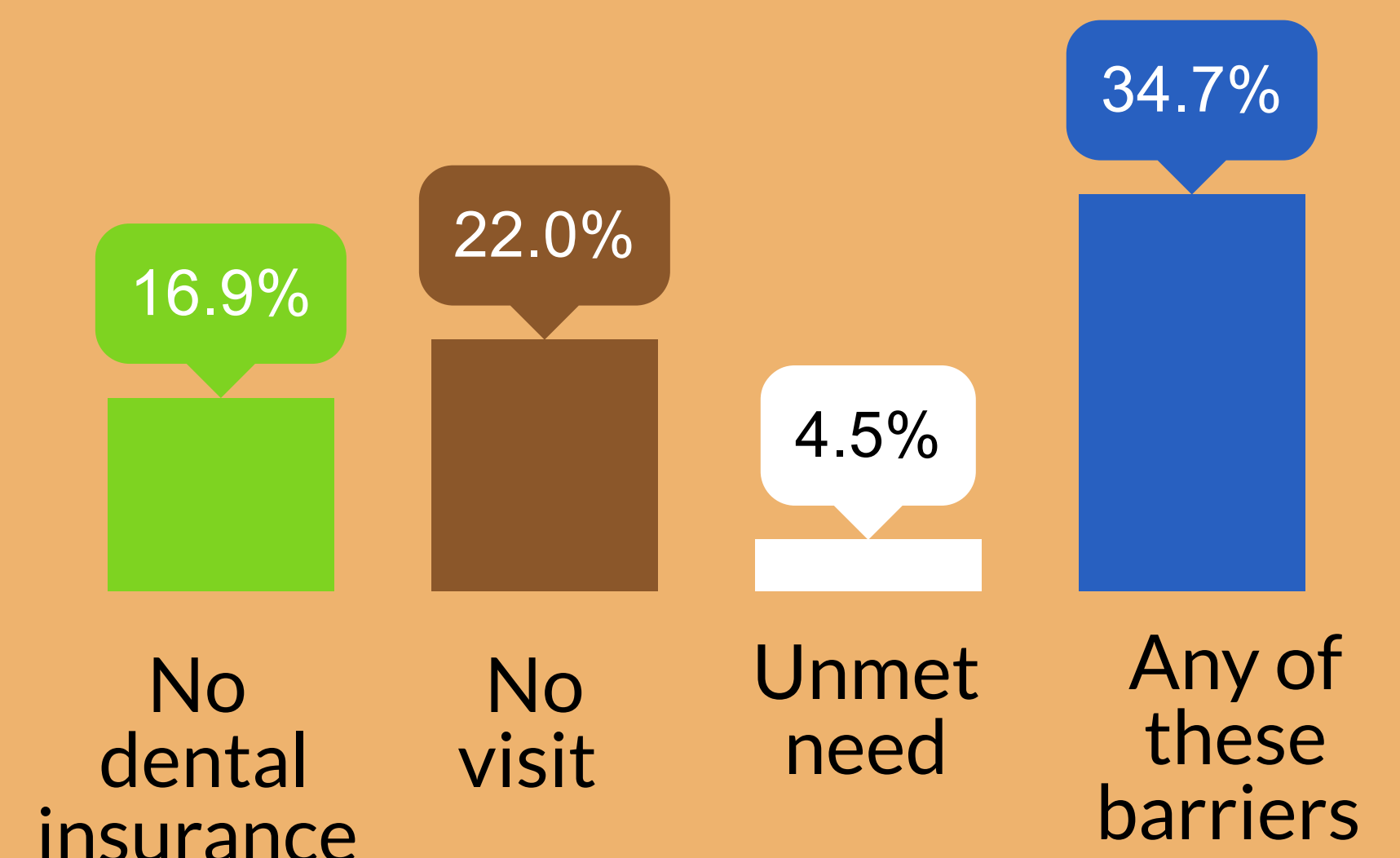
no dental insurance, no dental visit, or unmet dental need.



Adults ages 19-64

35% of children reported a dental access barrier in the past year.

Percent with a dental access barrier

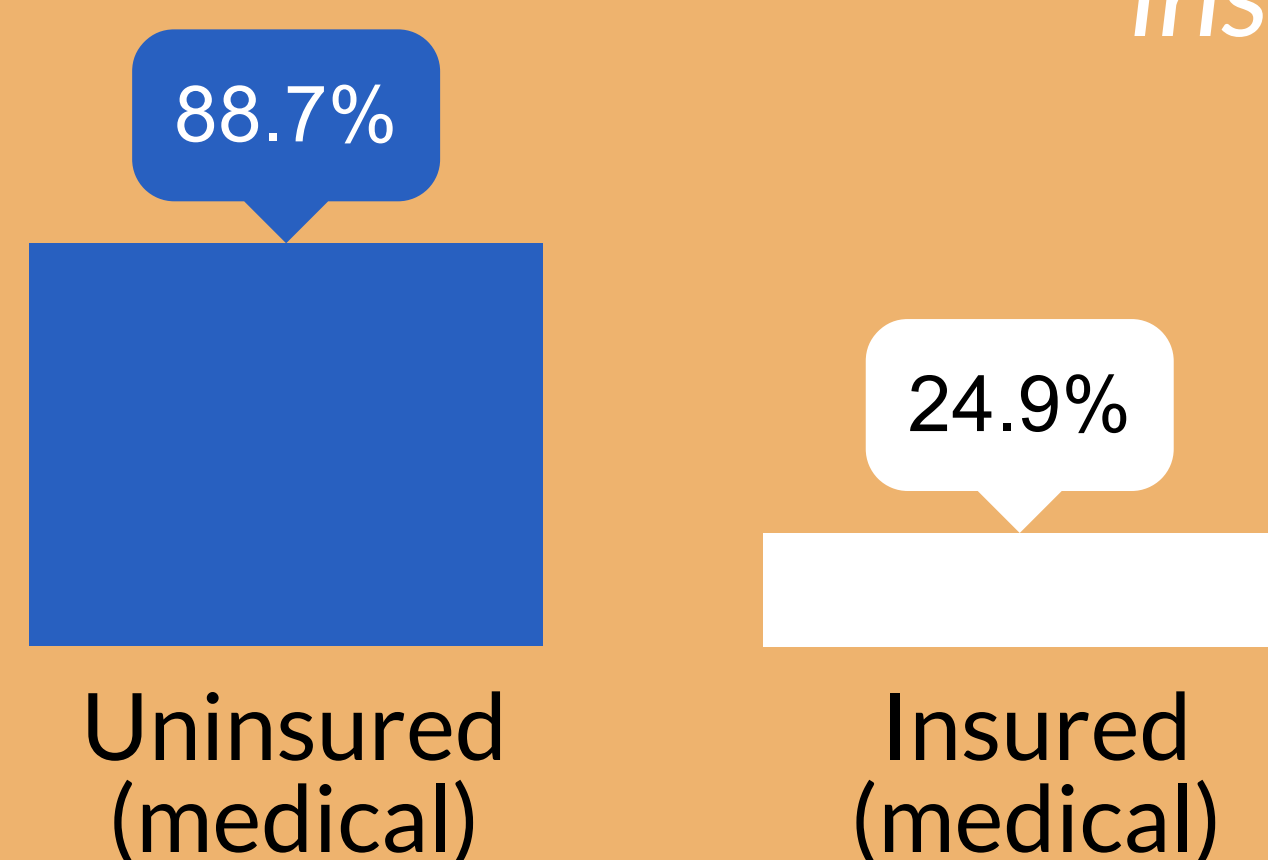
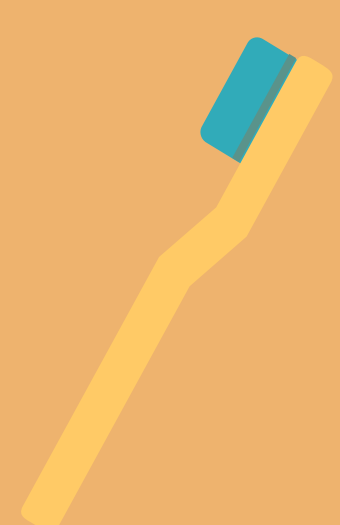


Children ages 2-18

89% of adults ages 19-64 with no insurance for medical care

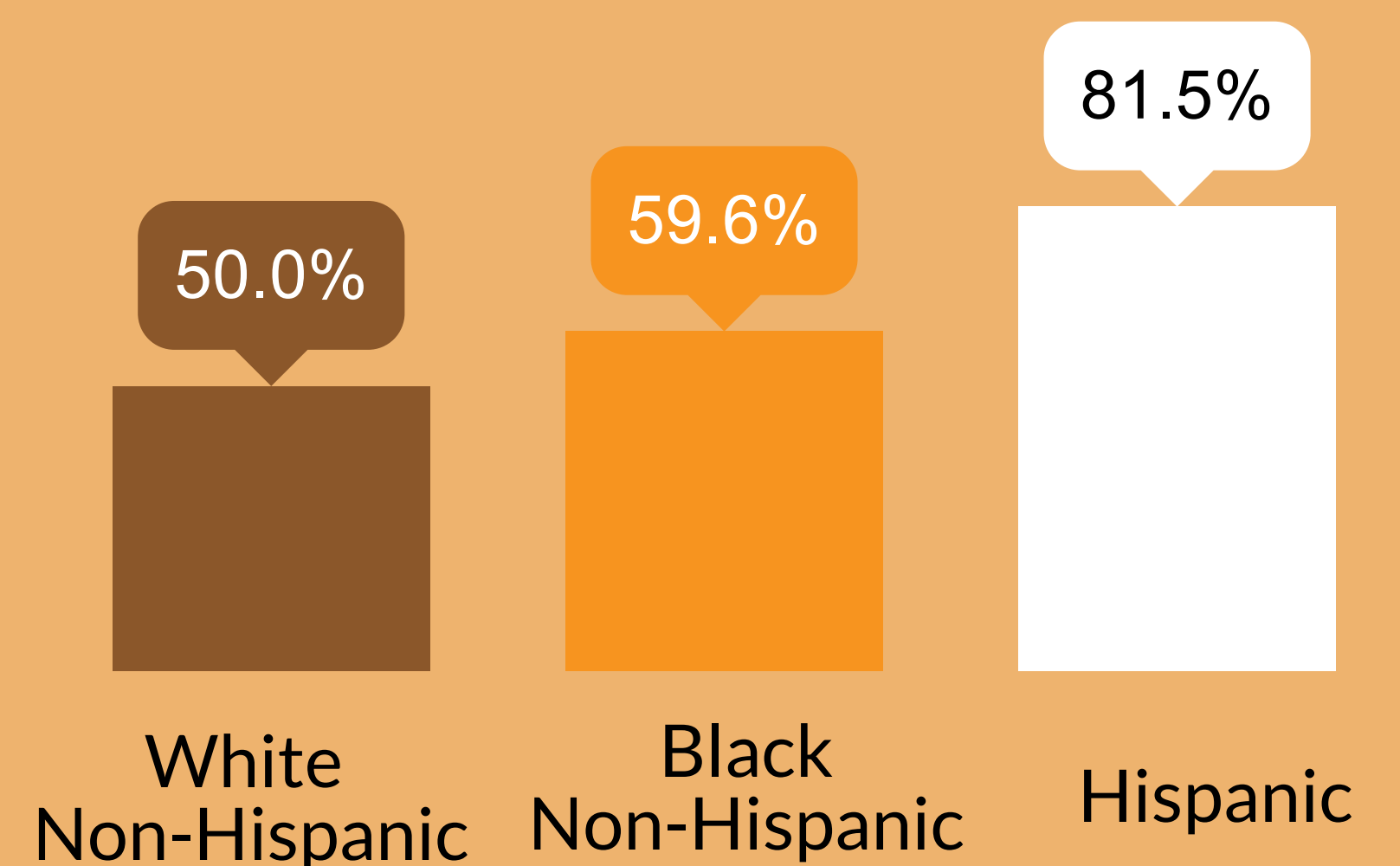
Percent with no dental insurance

... also have no dental insurance.



Dental access barriers are common across all racial/ethnic groups but are highest among Hispanic adults.

Percent with any barrier



The KMHS Results Report is available at
<https://reachhealth.org/kmhs-finalreport/>

